

揭东区2023年度第一百二十七批次城镇建设用地图

宗地编号：2023-127

2000坐标系

地籍图号：2608.80-39412.00

单位：m.m²

界址点坐标表

点号	X	Y	边长
1	2608849.049	39412228.044	108.39
2	2608922.347	39412307.891	29.75
3	2608901.678	39412329.293	5.06
4	2608898.165	39412332.932	8.23
5	2608892.462	39412338.861	5.63
6	2608888.575	39412342.938	8.04
7	2608882.426	39412348.122	4.74
8	2608878.602	39412350.922	5.16
9	2608874.422	39412353.939	5.09
10	2608870.268	39412356.885	3.51
11	2608867.422	39412358.936	3.97
12	2608864.145	39412361.181	4.11
13	2608860.810	39412363.583	5.30
14	2608856.516	39412366.691	5.42
15	2608852.097	39412369.831	5.51
16	2608847.821	39412373.048	2.61
17	2608845.480	39412374.535	4.64
18	2608841.695	39412377.219	5.69
19	2608837.065	39412380.533	9.59
20	2608829.190	39412386.001	

界址点坐标表

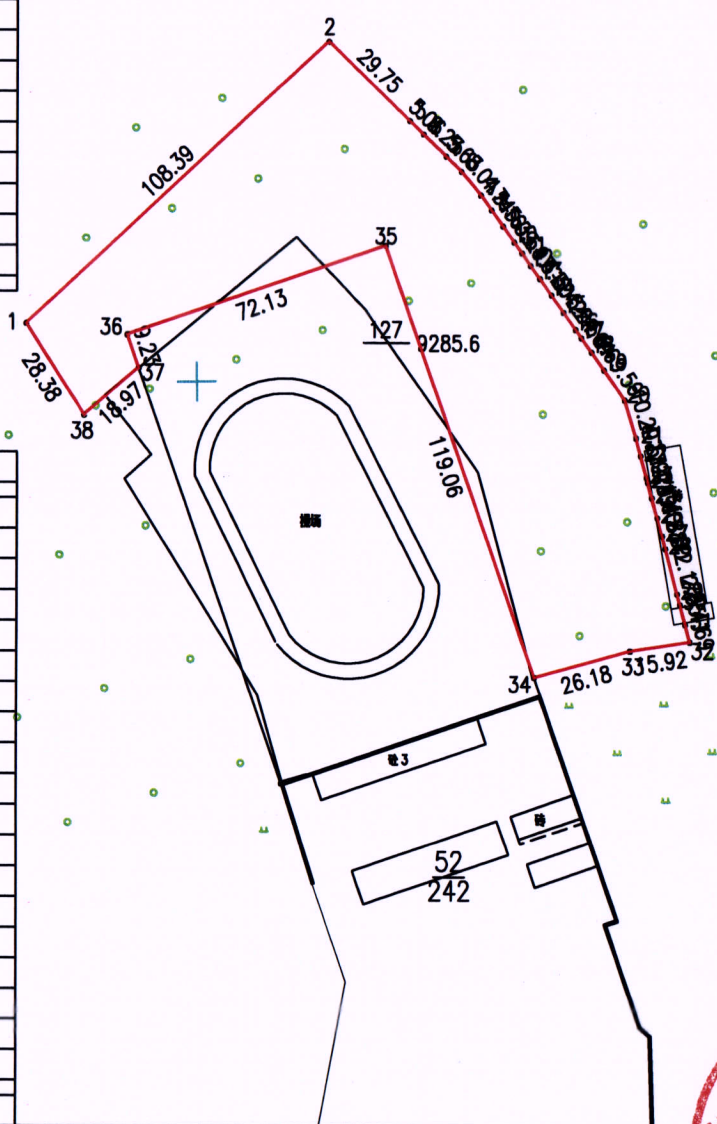
点号	X	Y	边长
20	2608829.190	39412386.001	10.29
21	2608819.338	39412388.955	4.77
22	2608814.729	39412390.189	5.91
23	2608809.017	39412391.722	1.24
24	2608807.816	39412392.031	4.19
25	2608803.757	39412393.074	5.40
26	2608798.542	39412394.486	4.88
27	2608793.827	39412395.747	3.50
28	2608790.448	39412396.647	12.17
29	2608778.678	39412399.746	2.85
30	2608775.927	39412400.495	5.41
31	2608770.690	39412401.873	4.69
32	2608766.158	39412403.095	15.92
33	2608763.790	39412387.351	26.18
34	2608756.850	39412362.106	119.06
35	2608869.279	39412322.911	72.13
36	2608846.073	39412254.619	9.23
37	2608837.356	39412257.658	18.97
38	2608825.067	39412243.210	28.38
1	2608849.049	39412228.044	

S=9286 平方米 合13.9284亩

北



龙尾镇龙珠村



绘图日期：2024年3月27日

1:2000

绘图单位（盖章）